



# SANigate

## MOBILE DISINFECTION CHAMBER

all-in-one user friendly sanitising solution

### MADE IN MALAYSIA

EASY-TO-INSTALL ANYWHERE  
COMPLETE KNOCKDOWN (CKD) DESIGN



BUATAN MALAYSIA  
MADE IN MALAYSIA



wheelchair-friendly



all types of footwear

FOR ENQUIRIES ON **SANigate**, CONTACT US AT +6019 2066 308 or [skb@skb.com.my](mailto:skb@skb.com.my)

### ALL-IN-ONE MOBILE DISINFECTION

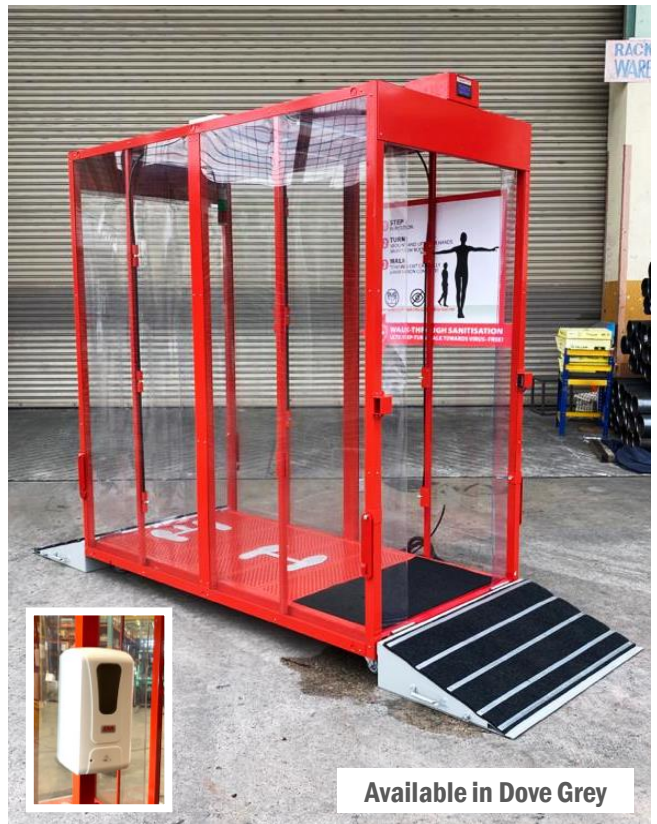
- Infrared Sensor Auto Start-Stop Activation
- Head-to-Toe All Round Mist Coverage
- Wheelchair-friendly Foldable Ramp
- Suitable for All Types of Footwear
- Mist Collection Tray with Drainage
- User-friendly Traffic Indicator Light
- LED Light with Transparent Panels

Optional Features:

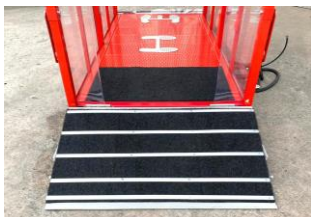
- Automated Hand Sanitiser
- Pass-Through LED Foot Traffic Counter
- Liquid Level Indicator

### ROBUST CONSTRUCTION

- 1100mmW x 2000mmL x 2100mmH
- Powder Coated Finishing in GREY
- Suitable for Indoor & Outdoor Use
- Steel Hollow Section Frames
- Heavy Duty Wheels with Brake for Safety



Available in Dove Grey



Non-slip Rubber Carpet on Ramp and Footmark



Pass-Through LED Foot Traffic Counter



All-Footwear & Wheelchair-friendly



Foldable Ramp for Easy Mobilisation



SKB SHUTTERS MANUFACTURING SDN BHD (31982-W)

Lot 22, Jalan Teknologi Taman Sains Selangor 1, Kota Damansara 47810 Petaling Jaya Selangor Darul Ehsan Malaysia

Customer Service Email (24 Hours) : [skb@skb.com.my](mailto:skb@skb.com.my) Website: [www.skb-shutters.com](http://www.skb-shutters.com)